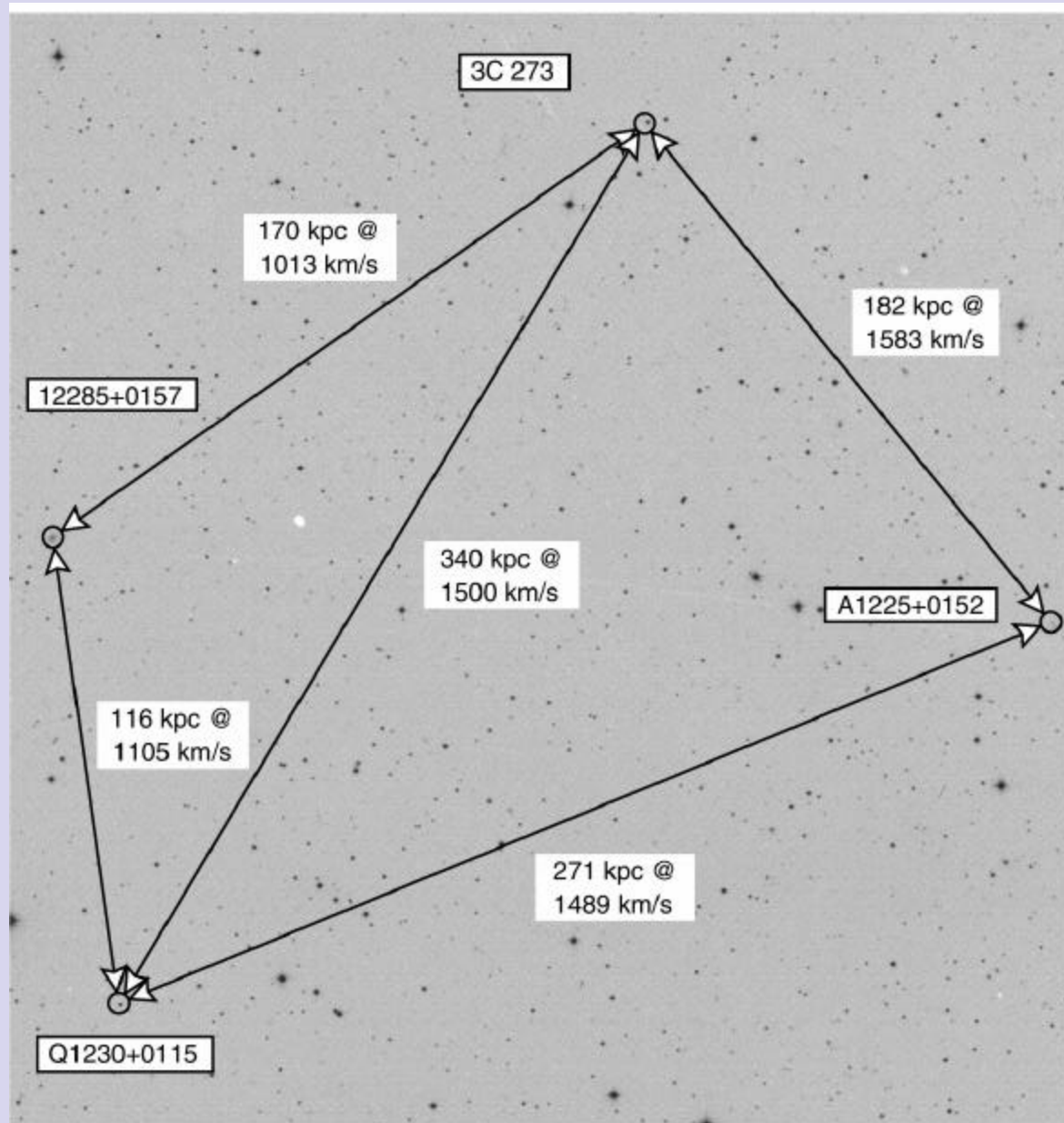


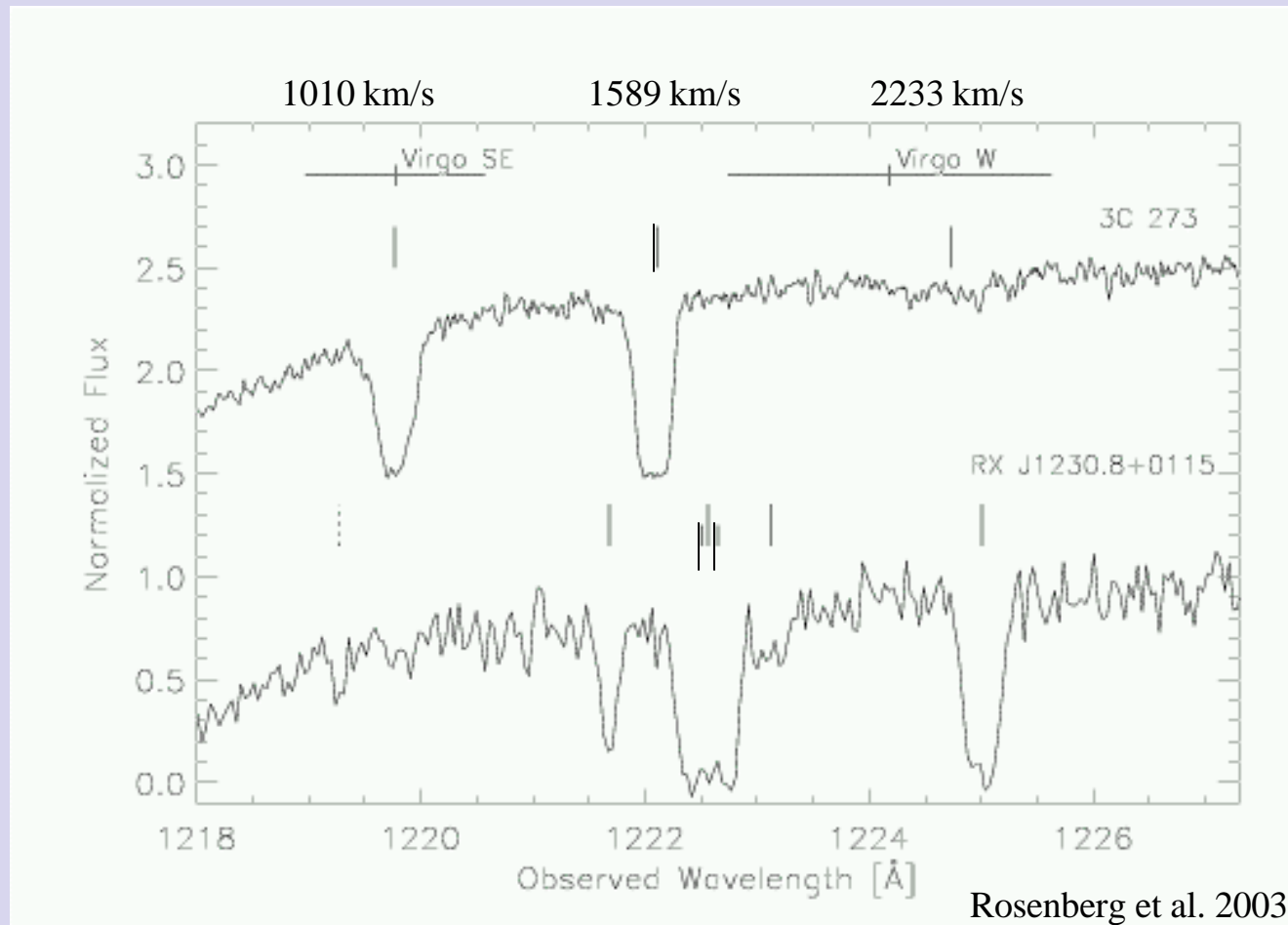


**Studying Galaxies and Everything in Between:
A Discussion of Research and Teaching**

Jessica Rosenberg
University of Colorado
NSF Astronomy and Astrophysics Fellow

An Intriguing Example of Galaxy/IGM Interaction





RX J1230+0115: $\log N_{\text{HI}} \sim 16-17$

3C 273: $\log N_{\text{HI}} = 15.85$, $Z=0.06Z_{\odot}$

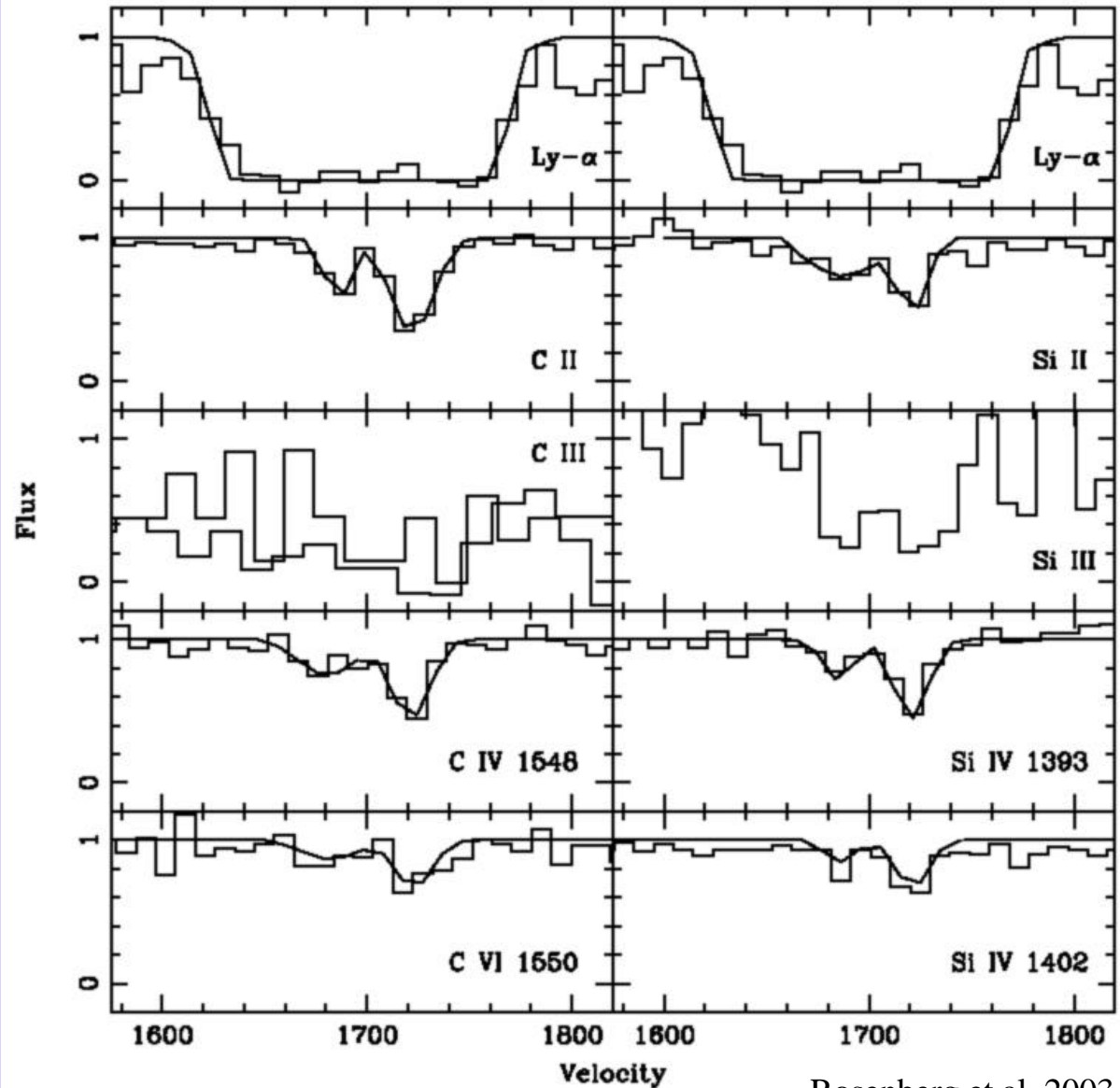
Excellent pair-wise association between the sightlines – coincidences indicate absorber radii of $100-250h_{70}^{-1}$ kpc (higher redshift ~ 350 kpc)

Metal Lines Show Enrichment of the Absorbers

Two components seen
in RX J1230.8+0115
system

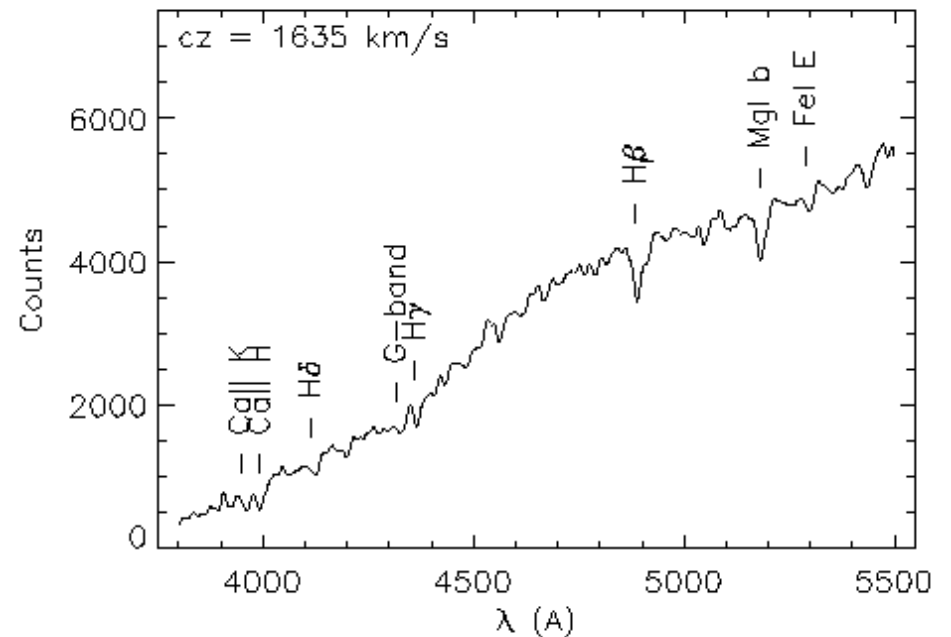
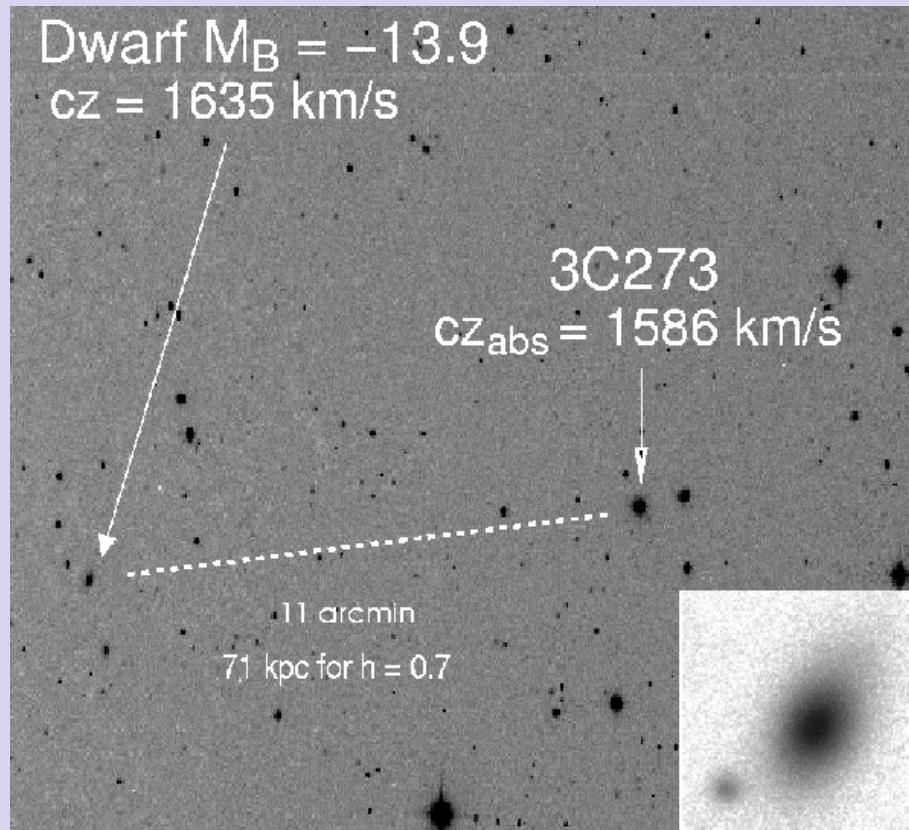
Strong metal lines in
RX J1230.8+0115 -
Ly- α and metal line
strength consistent with
 $Z \sim 0.06Z_{\odot}$ as in 3C
273 sight line. LOS
depth = 10-30 kpc

3C 273 metallicity =
 $0.06Z_{\odot}$ Tripp et al.
(2002). LOS depth = 70
pc



The Nearby Dwarf Starburst

71 kpc from 3C 273 sight line which has similar metallicity and possible Si/C overabundance (sn type-II enrichment). Time scale for fading starburst (2-3 Gyr) appropriate for outflow during SF epoch.



Summary

- Absorber associations indicate large sizes for correlated structures.
- Line-of-sight depths indicate that these are probably correlated but not contiguous structures.
- Differently ionized clouds have different size characteristics.
- Similar systems have been identified in galaxy groups (Shull et al) or as weak MgII absorbers (Charlton et al)
- Post-starburst galaxy near 3C273 may indicate importance of dwarf galaxies in expelling metal enriched material.
- No galaxy found within 270 kpc of the RX J1230.8+0115 absorber.

Science Explorers

<http://www.colorado.edu/ScienceDiscovery/teachers/sciex.html>

<http://casa.colorado.edu/~jrosenbe/teaching.html>

- Professional development for grades 5-8 science teachers
- Three workshops following a single theme each year
- Materials and curriculum developed for each workshop
- Concentrates on hands-on material
- Teachers plus 5 students work through pieces of each curriculum in day long workshops
- Material designed to be taken back to the classroom
- Programs run at urban and rural sites throughout Colorado

Curriculum Topics

How do we know:

The temperature of a star?

The composition of a star?

The distance to a star?

The velocity of a galaxy?

The distance to a galaxy?

Building a Doppler ball

